




Two Rivers Trail (phase II)

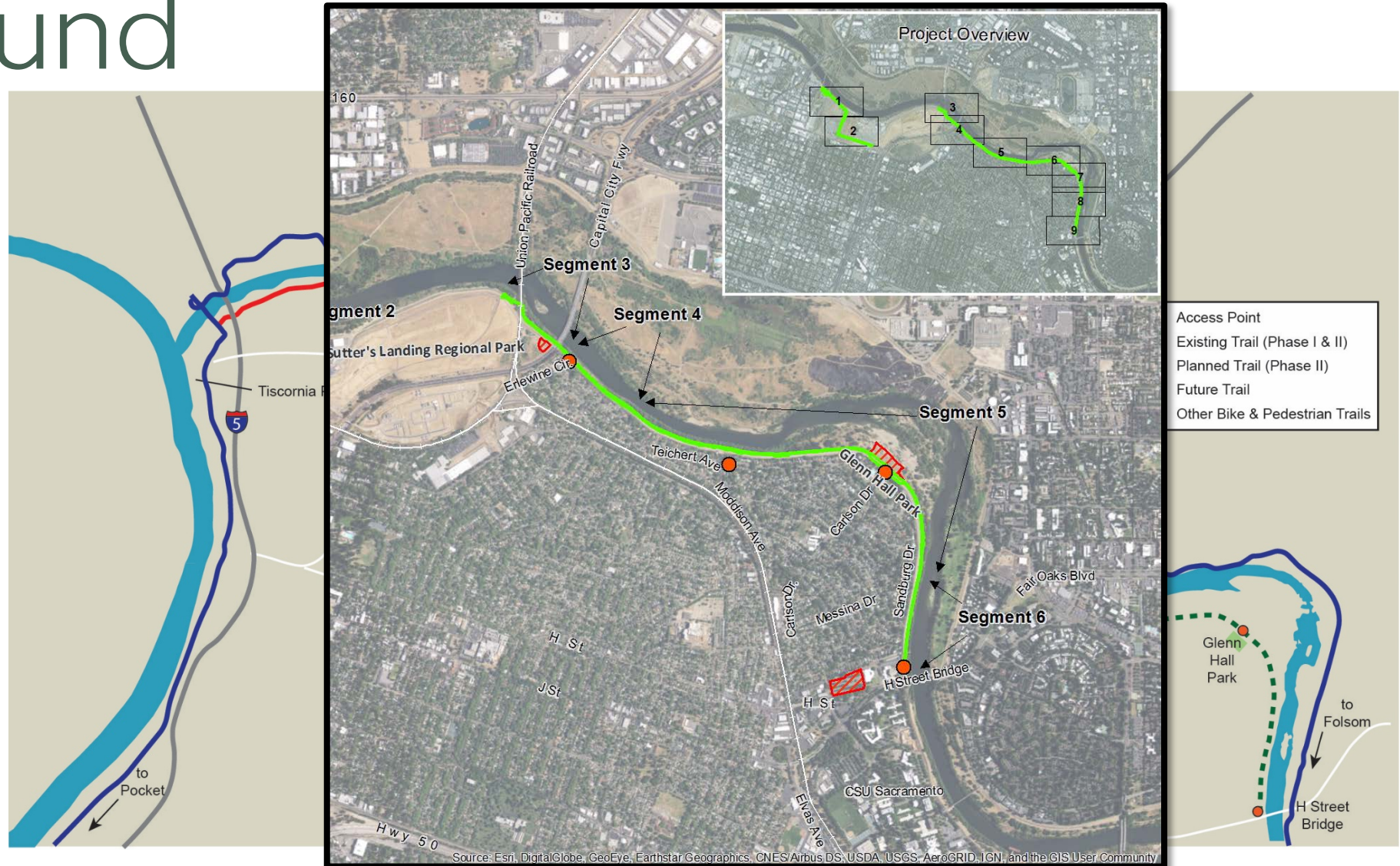
Adam Randolph
City of Sacramento



- 
- Background
 - History
 - Recreational Trail Policy
 - Steps to Comply
 - Request for a Variance

Background

- Project Limits
- Trail Segments



History

- 2006- Phase 1 constructed
- 2012- CIP Established
 - SACOG grant received
 - Pursued Levee Top Trail
- 2016- Revised Project
 - ATP grant

Recreational Trail Policy

- Levee top Not Acceptable
- Develop new concepts

RECREATIONAL TRAILS POLICY

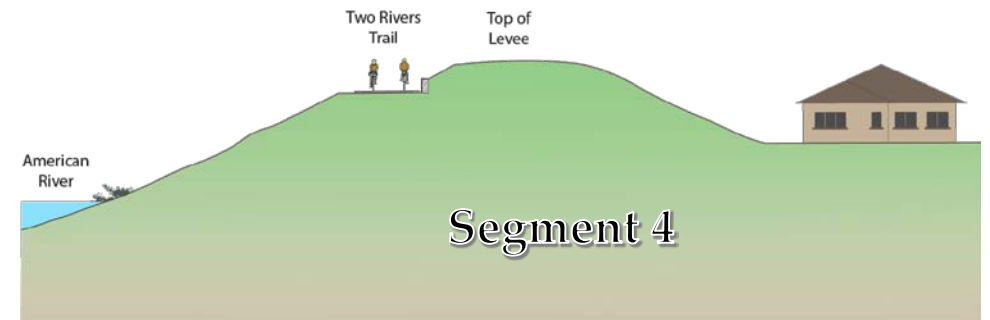
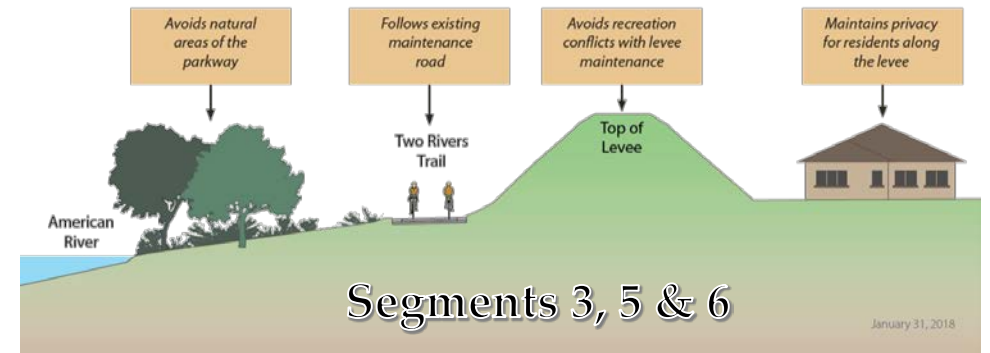
The American River Flood Control District is responsible for operating and maintaining 40 miles of levees protecting the Sacramento community. The primary purpose of the

Layout of Trail. In designing the recreation trail system, the applicant shall include the following standards:

- a.) The District's preference is to locate trails off the levee crown on either the land or waterside of the levee, where feasible, in accordance with the State Reclamation Board regulations. If not feasible, or if the applicant desires to locate the trail on the crown for other reasons, the Board may approve locating the trail along the crown on a case-by-case basis. If approved, the District will still require stretches of the trail along a levee segment to be located off the crown for a reasonable distance (200 to 300 feet). This provides for the extended storage of material and equipment by the District to facilitate levee maintenance without impacting trail usage. Varying the trail between the crown and land or waterside levee toes most easily accommodates this. The Board may grant variances on a case-by-case basis.

Steps to Comply

- Re-design of project
- Sought funding for additional costs
- Regulatory Approvals
- Stakeholder Correspondence
- Environmental Approvals



Variance Request

- “Infeasibility”
 - Higher Biological Impacts
 - Higher Costs
 - Difficult Enviro Process
 - Difficult Permitting Process
 - Invasive Construction
 - Longer Construction

RECREATIONAL TRAILS POLICY

The American River Flood Control District is responsible for operating and maintaining 40 miles of levees protecting the Sacramento community. The primary purpose of the **Layout of Trail.** In designing the recreation trail system, the applicant shall include the following standards:

- a.) The District's preference is to locate trails off the levee crown on either the land or waterside of the levee, where feasible, in accordance with the State Reclamation Board regulations. If not feasible, or if the applicant desires to locate the trail on the crown for other reasons, the Board may approve locating the trail along the crown on a case-by-case basis. If approved, the District will still require stretches of the trail along a levee segment to be located off the crown for a reasonable distance (200 to 300 feet). This provides for the extended storage of material and equipment by the District to facilitate levee maintenance without impacting trail usage. Varying the trail between the crown and land or waterside levee toes most easily accommodates this. The Board may grant variances on a case-by-case basis.