

American River Flood Control District

Deauthorization of McClaren Drive Levee Reach

Staff Report

Discussion:

The north levee of the American River extends from the Sacramento River to 0.7 miles upstream of Arden Way. There is a distinct discontinuity in the appearance and operation of the levee at Arden Way.

Downstream of Arden Way to the Sacramento River, the American River Levee has full access for operations and maintenance from toe to toe with landside and waterside toe roads along much of that distance. The short segment upstream of Arden Way along McClaren Drive is characterized by little to no access for operations and maintenance. Much of the levee in that segment is behind private fences or within the yards and landscaping of the private residences.

Hydraulic modelling of the river levels at high flood flows have shown that the US Army Corps of Engineers' objective release from Folsom Dam does not have water touching the levee upstream of Arden Way. For some reason, that is unclear at this time, the segment of levee along McClaren Drive was built on high ground and was not built for the same flood objective as the rest of the District levee downstream of Arden Way.

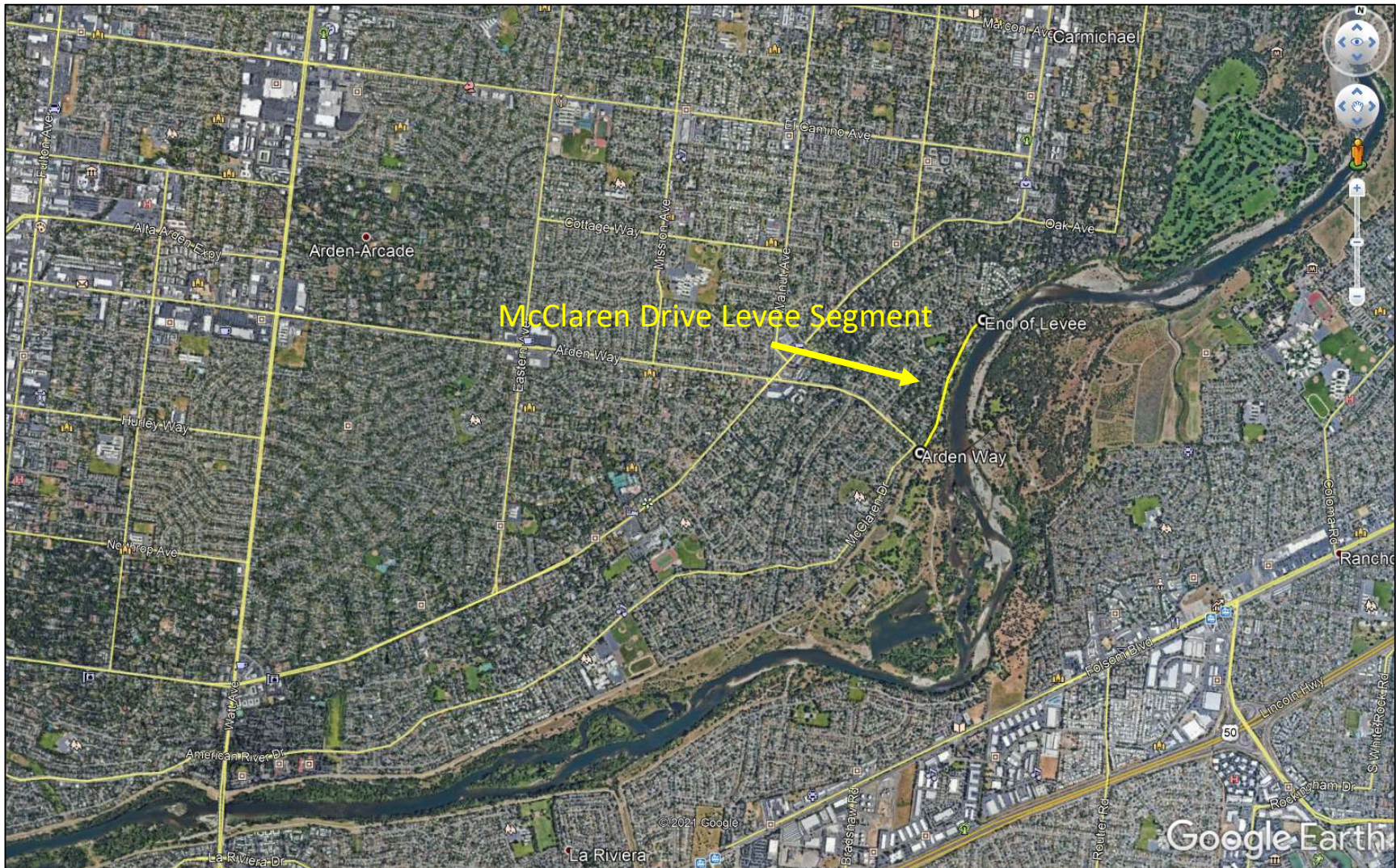
For a number of years, District staff has investigated ways to remove the McClaren Drive section of levee from the federal authorization for our flood control system. If the levee segment is not necessary for protecting the Carmichael community from inundation at the floodways' current design level, removing the levee segment's status of being within the federal system could release the District from the burden of having to operate and maintain it to the strict state and federal standards for urban levees.

Staff enlisted the help of MBK Engineers to help identify ways to deauthorize the McClaren Drive levee segment. Ric Reinhardt with MBK Engineers recently informed us that they were able to help a reclamation district in Marysville accomplish this very same goal. The effort involved getting their local Congress member to sponsor a bill or put language in an existing bill to deauthorize a levee reach that was no longer necessary for the current plan of flood control. Ric was confident the same approach could be used to seek deauthorization of the McClaren Drive levee segment.

Recommendation:

The General Manager recommends that the Board of Trustees approve the plan to have MBK Engineers develop a methodology for us to engage our Congress member on the topic of deauthorizing the McClaren Drive levee segment.

McClaren Drive Levee Segment American River North Levee



McClaren Drive Levee Segment American River North Levee

