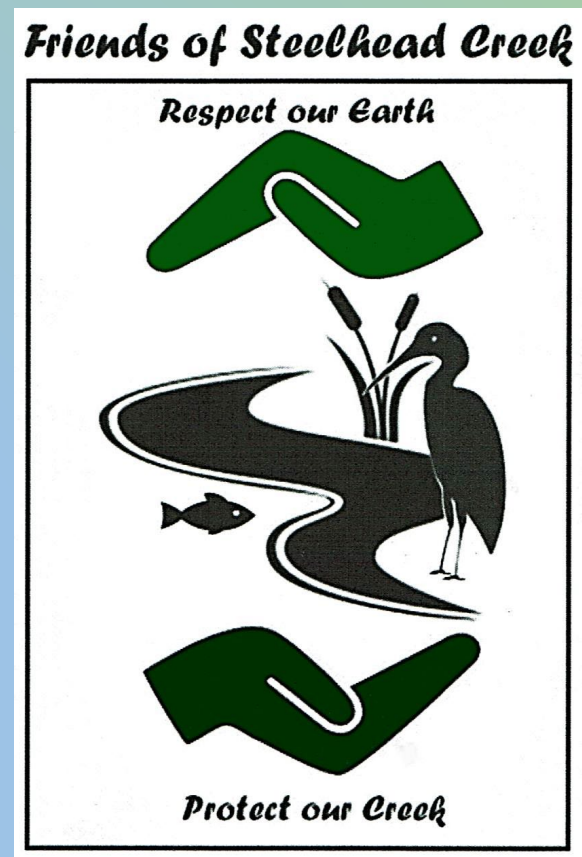
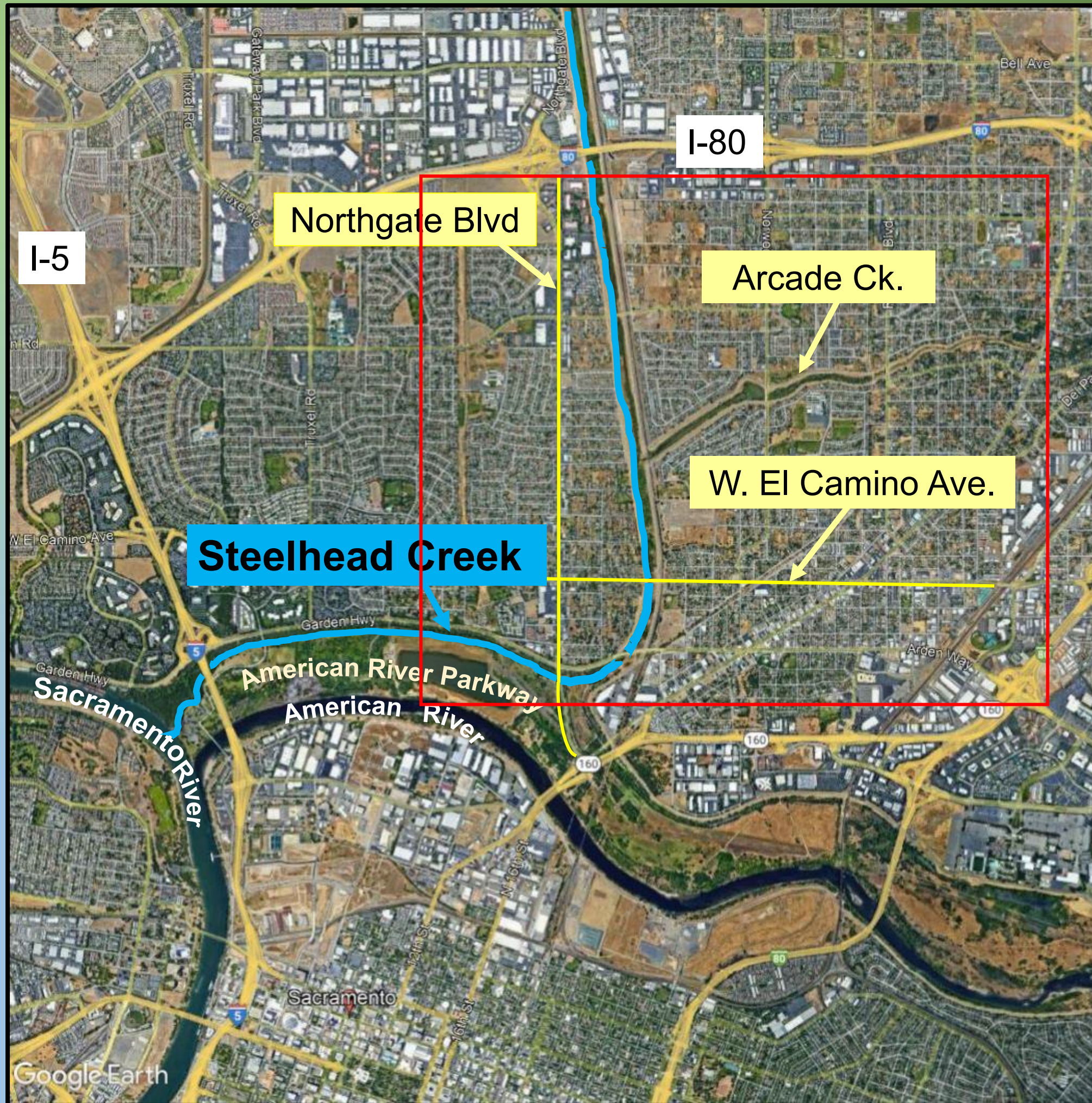


# CONDITION OF THE STEELHEAD CREEK RIPARIAN CORRIDOR, SACRAMENTO

**Roland H. Brady III, PhD** – Friends of Steelhead Creek, Professional Geologist #5721

**Mark Baker** – Co-founder, River City Waterway Alliance





**Steelhead Creek**

**I-5**

**I-80**

**Northgate Blvd**

**Arcade Ck.**

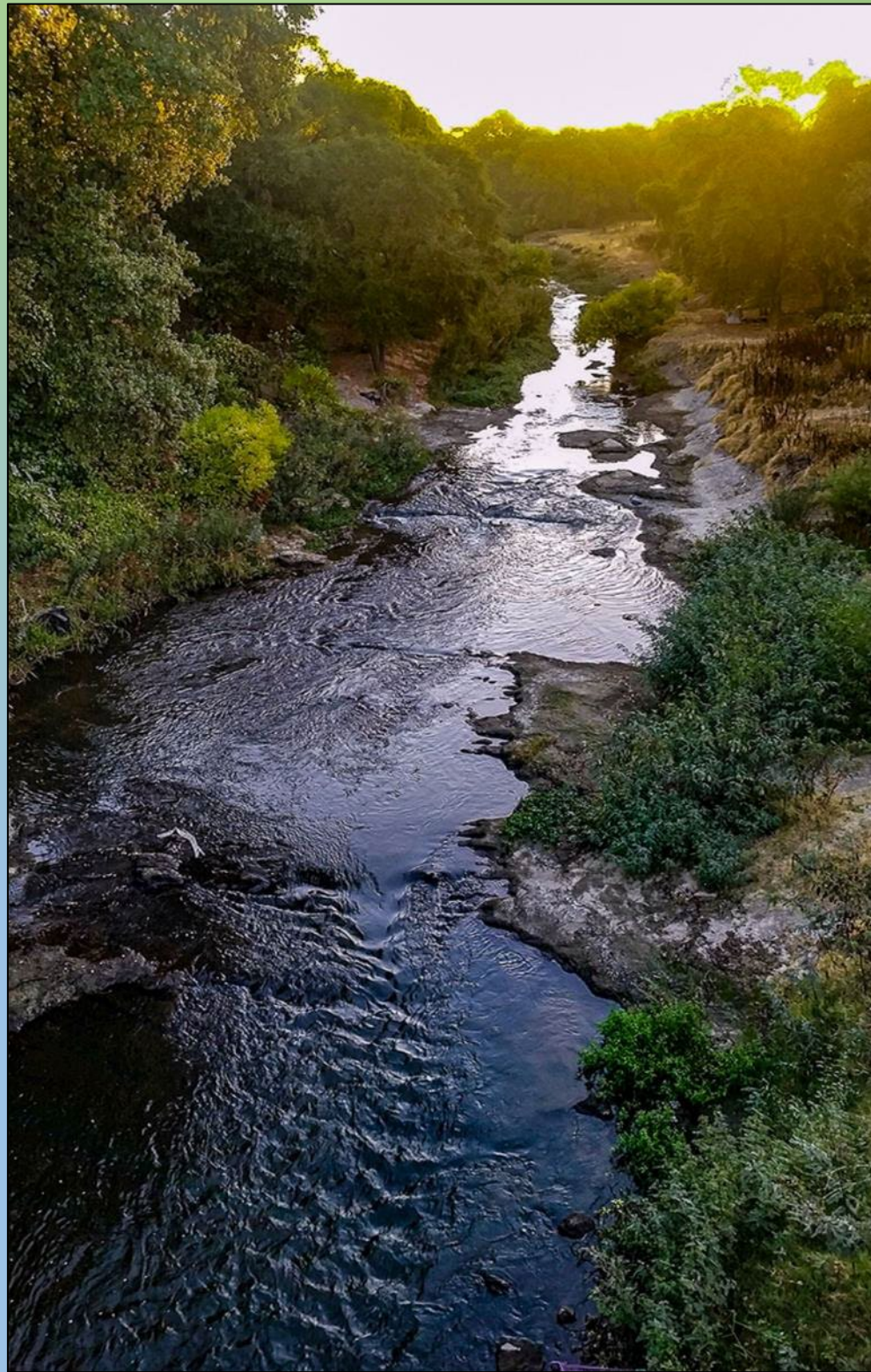
**W. El Camino Ave.**

**American River Parkway**

**Sacramento River**



# Urban ecological habitat includes both land and water....



Refuge for fish, birds, salamanders, frogs, snakes, otters, beavers, raccoons, deer, skunks.....

# Central Valley Steelhead and Central Valley Chinook Salmon

Majority of California's steelhead populations listed under federal Endangered Species Act (ESA).



***“With dwindling populations and passage issues, preserving local habitat is more important than ever.”***  
(NOAA Marine Fisheries, 2019)

# CALIFORNIA FISH AND GAME CODE 5652

(Effective January 1, 2008 )

*(a) “It is unlawful to deposit, permit to pass into, or place where it can pass into the waters of the state, or to abandon, dispose of, or throw away, within 150 feet of the high water mark of the waters of the state, any cans, bottles, garbage, motor vehicle or parts thereof, rubbish, litter, refuse, waste, debris....etc.”*

The channel has been assaulted by years of dumping including



Which accrete debris and vegetation, impeding fish passage.

And homeless camps on the floodplain



and inside the channel....







These are vulnerable to flooding when this...

Becomes this...



This....



becomes this.



Courtesy R. Smith

Tons of trash wash into the creek.

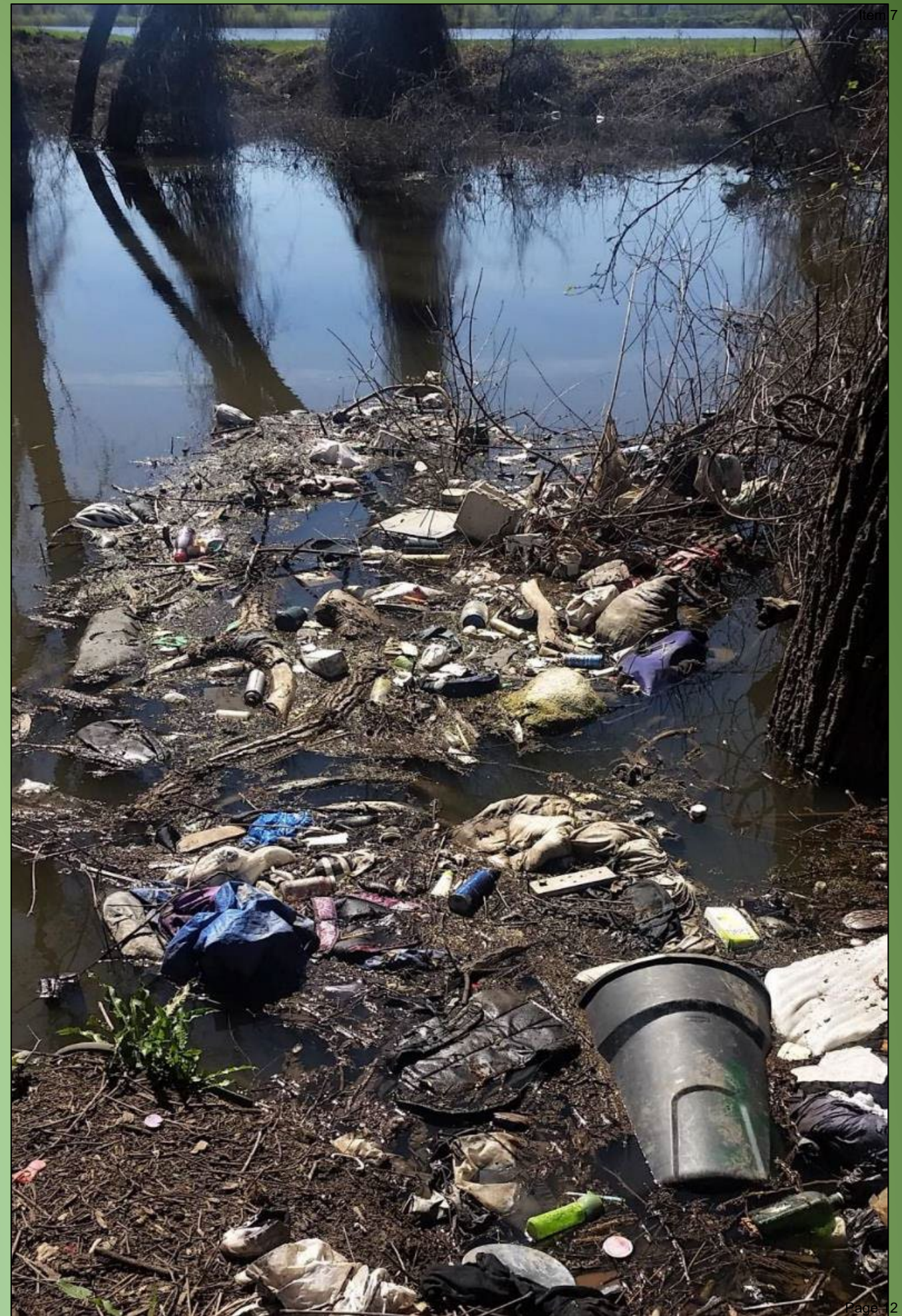
Not “merely aesthetic”.



Some floats – washes into  
Sacramento River, delta, Pacific.

70-80% of plastic in oceans comes  
from mismanaged plastic waste  
discharged from rivers.

(NOAA)



# Plastic waste: 1) Micro plastic, 2) Nanno plastic.



Left bank, 750 ft us of El Camino bridge.

# Toxic chemical waste.



# Pathogenic waste: Human and dog feces, needles.



Release *E. Coli*, Hepatitis, HIV.

Data Log: Site 8. Appx 551 ft ds of W El Camino Bridge				
Item	Note	Number	Vol (cu ft) (Hts @ 20" diam)	Wt (lbs)
<b>Textiles:</b>		<b>66</b>	<b>7.5</b>	<b>195</b>
Blanket, sleeping bag, quilt, pillow		6		
Mattress, pad		12		
Clothing (large-coat, shirt, pants)		8	13	69
Clothing (small- underwear, hat, sock, glove)		0	12	58
Tent or fragment of		2	16	68
Carpet remnant		3		
Storage or travel bag		28		
Misc. (shoes)		7		
<b>Plastic:</b>		<b>148</b>	<b>5.8</b>	<b>54</b>
Tarp (larger than 1' x 1')		3		
Bag		40		
Fragment (smaller than 1' x 1')		81		
Plastic container (large > 1 qt)		1	20	34
Plastic container (small < 1 qt)		2	12	20
Fishing line		4		
Styrofoam		17		
<b>Rubber:</b>		<b>41</b>	<b>57.1</b>	<b>722</b>
Truck tire	@ 5.8 cu ft and 90 lbs/tire	0		
Automobile tire	@ 2.0 cu ft and 22 lbs/tire	27	54.0	594
Foam mat fragment	2 each at 24x24x3	3	2.0	125
Bicycle tire		3		
Hose		4	6	3
<b>Metal:</b>		<b>26</b>	<b>36.1</b>	<b>298</b>
Shopping cart	@ 15 cu ft and 60 lbs	2	30.0	120
Bicycle frame	@ 1.5 cu ft and 12 lbs	0		
Automotive parts		1		
Bicycle part		3		
Container		10	16	48
Cooking items		0		72
Wire, pipe, and tubing		9		
Car seat inc cushion	24x29x8	1	3.2	58.0
<b>Electronics and Electrical:</b>		<b>3</b>	<b>0.3</b>	<b>2.5</b>
Car stereo, radio		3	0.3	
<b>Paper, Wood and Cardboard:</b>		<b>10</b>	<b>1.6</b>	<b>12</b>
Magazines		4	9	
Boards, plywood		6		
<b>Glass and Ceramic:</b>		<b>75</b>	<b>2.5</b>	<b>44</b>
Container		43	10	
Fragments	Stopped counting, too many	32	4	44
<b>Hazardous materials:</b>		<b>1</b>		
Automobile oil filter with oil		1		

# Some forms "channel armor".

- Textiles
- Plastic
- Rubber
- Metal
- Electronics
- Paper, wood, cardboard
- Glass and ceramic
- Hazardous materials

		Number	Vol (cu ft)	Wt (lbs)
<b>TOTALS:</b>	Total (effective) area = 30% = 100 ft <sup>2</sup>	<b>370</b>	<b>111</b>	<b>1327</b>
Area covered (sq ft)	300			
Items/sq ft	1.2			
Cu ft/sq ft	0.4			
Lbs/sq ft	<b>4.4</b>			



# Textile Armor: Covers bottom; chokes out oxygen from substrate.



Removed from 250 ft of channel (Arcade Creek).



60% to 90% of Steelhead Creek bottom covered by textile armor.

Cleaning up this mess is difficult and time consuming, but has to be done.

Requires cooperation of agencies, government, citizens.





FSC and RCWA are here to help but we need *your* help to prevent Steelhead Creek from reaching its tipping point.





## What ARFCD can do:

- Abide by CDF&W Code 5652 prohibiting trash and debris within 150-ft from the high water line. No Camping.
- Demand alternative sites for homeless persons to camp be established.
- Identify clear agency jurisdictions within and along the water way. Resolve “Not our responsibility.” for removing trash.
- Develop an on-going management plan to undo the damage and protect the aquatic habitat and water quality. Line-item funding.

- Join FSC and RCWA in the interagency cleanup, Oct. 5-6, 9-10.



Hoss' camp, left bank, Steelhead Creek 750 ft us El Camino bridge.



Help protect Steelhead Creek  
for the environment, for the  
people.

*Thank you!*